

MENTAL HEALTH FACILITIES

Safe Ensuites

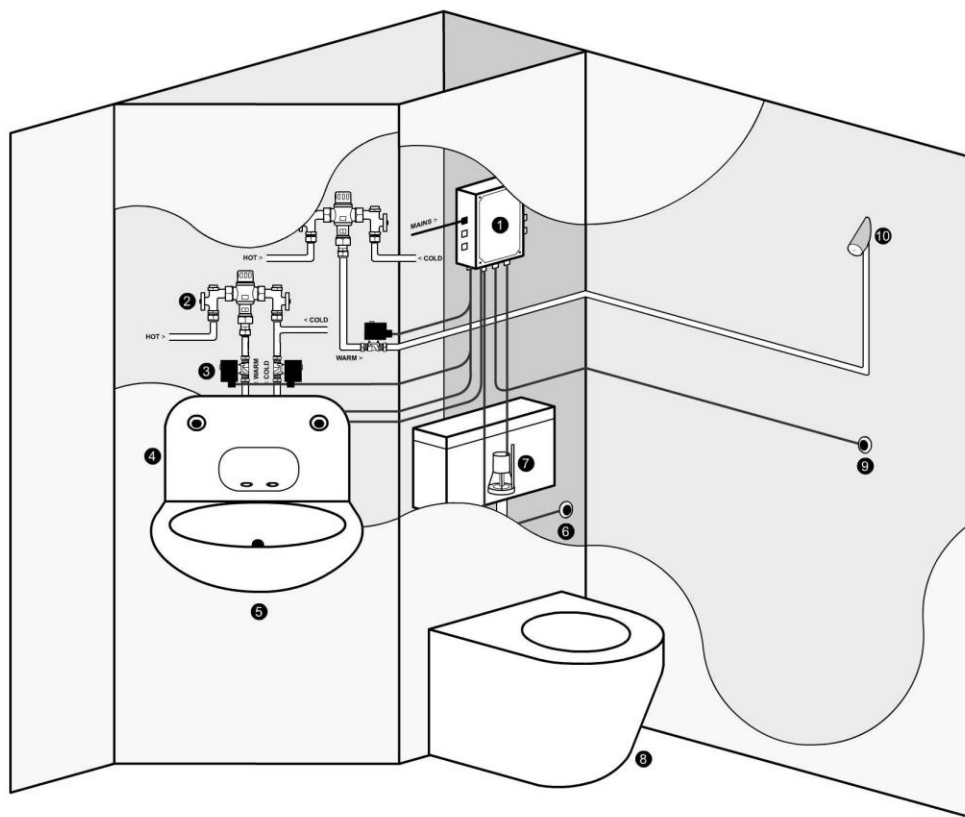
High Risk ensuites



HIGH RISK SAFE ENSUITE

The standard DVS ensuite products are designed and tested for the high risk category and are proposed for these areas.

OPTION 2 - High Security with DVS Anti-Vandal Wash Basin and WC Pan



KEY

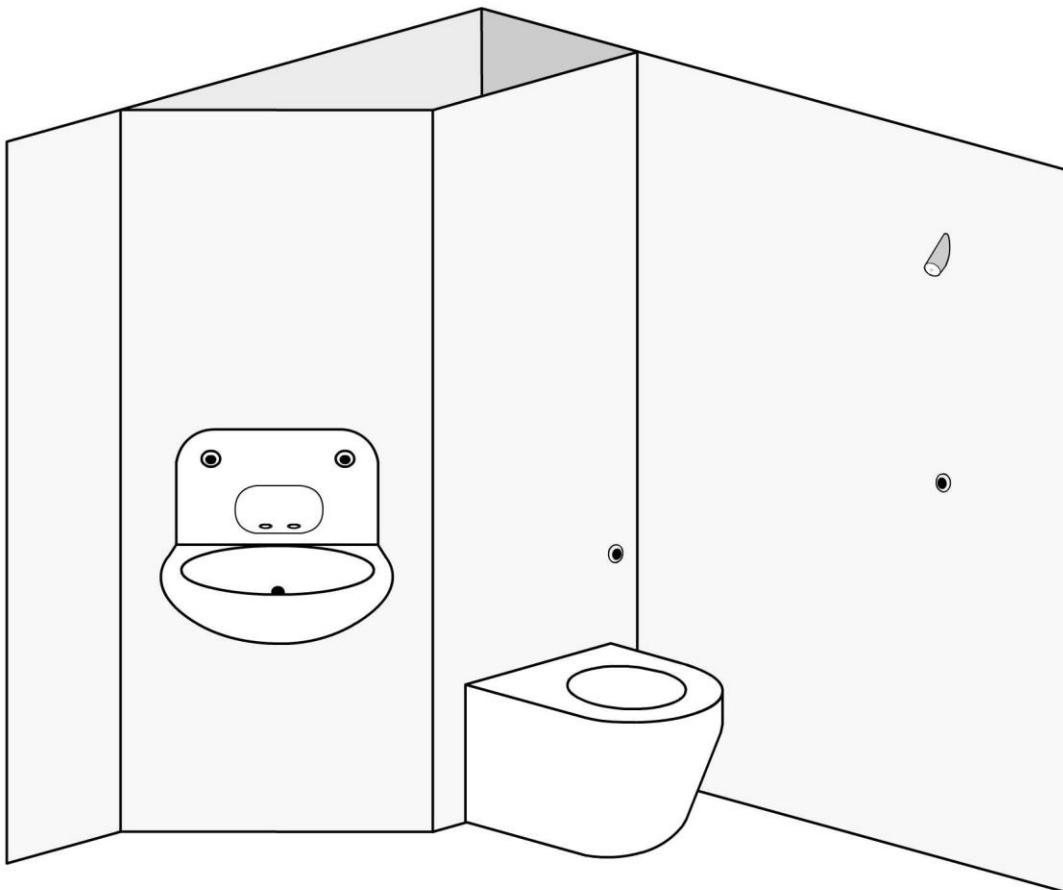
- 1 DVS Washroom Control System
- 2 TMV3 Mixing Valve
- 3 Solenoid Valve
- 4 DVS Custodial Backplate
- 5 DVS Custodial Basin
- 6 DVS WC Wave-On Sensor
- 7 DVS WC Flushvalve and Concealed Cistern
- 8 DVS Custodial WC Pan
- 9 DVS Shower Wave-On Sensor
- 10 DVS Anti-Ligature Showerhead

The presentation will cover

- The users facilities and operation
- The safety features
- Product Listing

THE USERS FACILITIES AND OPERATION

OPTION 2 - High Security with DVS Anti-Vandal Wash Basin and WC Pan



SAFETY

The Dart Valley Systems high security safe ensuite products have been designed and tested to be vandal proof and avoid ligature points wherever possible.

The sanitary-ware has been tested at HMP test centre at Lindholme. Unfortunately we cannot guarantee protection against those intent on self-harm, but consider the designs and precautions taken are to a high standard and in some areas outstanding, thus reducing the risks.

The general considerations include:

- Designing to avoid ligature points**
- Products to be vandal proof**
- Avoiding the possibility of patients obtaining dangerous material, for self harm or to harm others**
- Water to be thermostatically controlled**
- Facilities to Lock-Out water operations**

SANITARY-WARE

Conventional Resin Safe Ensuite Sanitary-Ware



DVS Sanitary-Ware is virtually unbreakable



WASH BASINS



- The basin construction is virtually unbreakable unlike other resin sanitary-ware, which could provide dangerous pieces which could be used for self-harm or to harm others.
- Ligature free design
- The water is supplied through two conventional flow laminar water spouts which deliver water at 6 liters per minute.
- Wave hand in front of sensor [or attempt to touch] to operate and water runs for pre-set period. Only one operates at one time.
- The outer ring of the sensors will be **red** for warm and **blue** for cold
- Used with TMV3 thermostatic valves to avoid scalding
- There is a loose rubber bung for basin filling

WC PAN & SENSOR



- **The operation is similar to the basin with a wave-on sensor**
- **The sensor bezel is ligature free and vandal proof**



- **The Pan has a domestic look and finished in sanitary gel coat**
- **The Pan construction is virtually unbreakable unlike other sanitary-ware, which could provide dangerous pieces which could be used for self-harm or to harm others.**
- **Ligature free design**

SHOWER

There are two options for operating the shower. Both are vandal proof and virtually ligature free

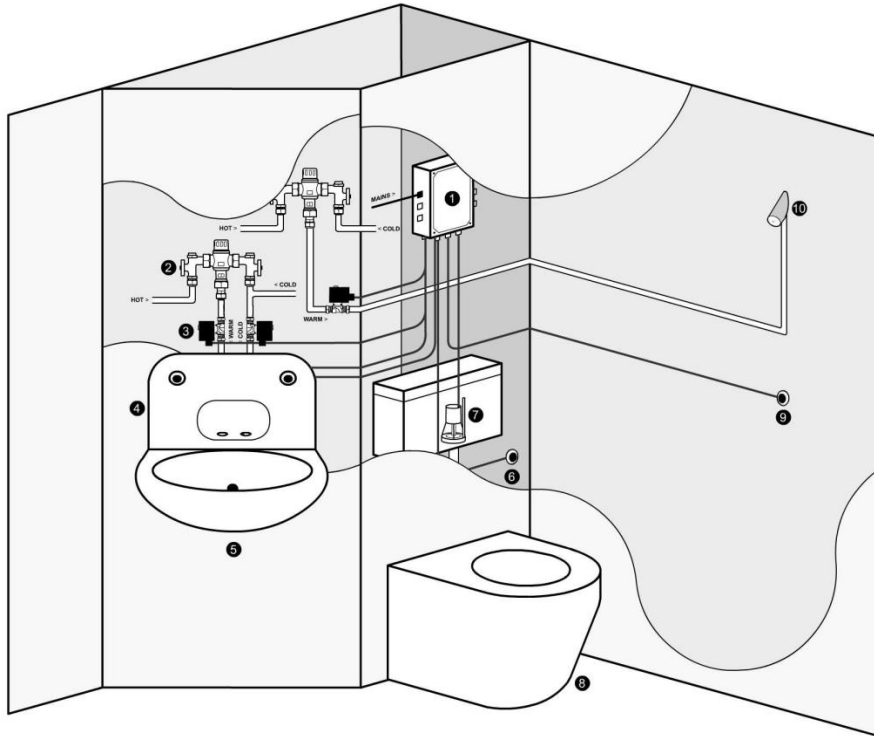
- Wave-on sensor
- Push button sensor



- The shower head is vandal proof and virtually ligature free.
- The run time is pre-set
- The temperature is preset through a Tmv3 mixing valves [normally at 41°C] to avoid scalding

PRODUCT LISTING

OPTION 2 - High Security with DVS Anti-Vandal Wash Basin and WC Pan



KEY

- ❶ DVS Washroom Control System
- ❷ TMV3 Mixing Valve
- ❸ Solenoid Valve
- ❹ DVS Custodial Backplate
- ❺ DVS Custodial Basin
- ❻ DVS WC Wave-On Sensor
- ❼ DVS WC Flushvalve and Concealed Cistern
- ❽ DVS Custodial WC Pan
- ❾ DVS Shower Wave-On Sensor
- ❿ DVS Anti-Ligature Showerhead

1. Washroom Control System

The control box controls all items in the washroom



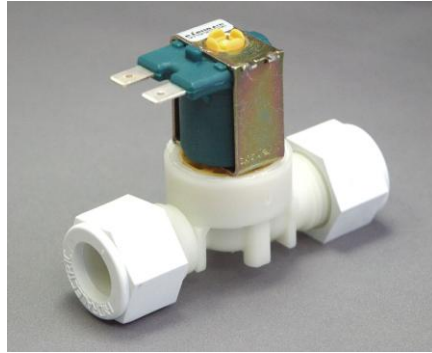
- Adjustable run times for basin taps, WC Flushing and Shower.
- Lock-out facility to limit the number of operations of each application in a 20 minute period. After 20 minutes it resets
- Application are programmed to be used individually to prevent flooding

2. Thermostatic mixing valves –Shown as option



- Set basin warm to 41°C and Shower to 41°C

3. Solenoid valves



4. & 5. DVS Backplate and Basin



- Complete with in built spouts with 6 liter per minute flow laminar outlets
- Wave-on sensors and flush bezels

6. DVS WC Wave-on sensor



7. Cistern



- The cistern and quiet fill valve and float are conventional

7. WC Flushvalve



- The WC Flushvalve is a unique product
- Optimum flushing, reducing water.
- Very reliable, used in many applications including most UK airports and motorway services
- Adjustable for optimum water use and flushing

8. WC Pan



- The Pan has a domestic look and finished in sanitary gel coat

9. Shower Sensors



- Options are wave-on or tactile at the same price
- Most installations use the wave-on sensor but some prefer the push button tactile switch to reduce the risk of accidentally turning on the shower
- The sensing range of the wave-on sensor is 50mm

10. Shower Head



- The shower head is stainless steel set at 35deg angle
- The shower spread can be reviewed and supplied to suit

TYPICAL SERVICE DUCT LAYOUT

SHOWING OPTIONAL MANIFOLD

V.L3CLS052AF

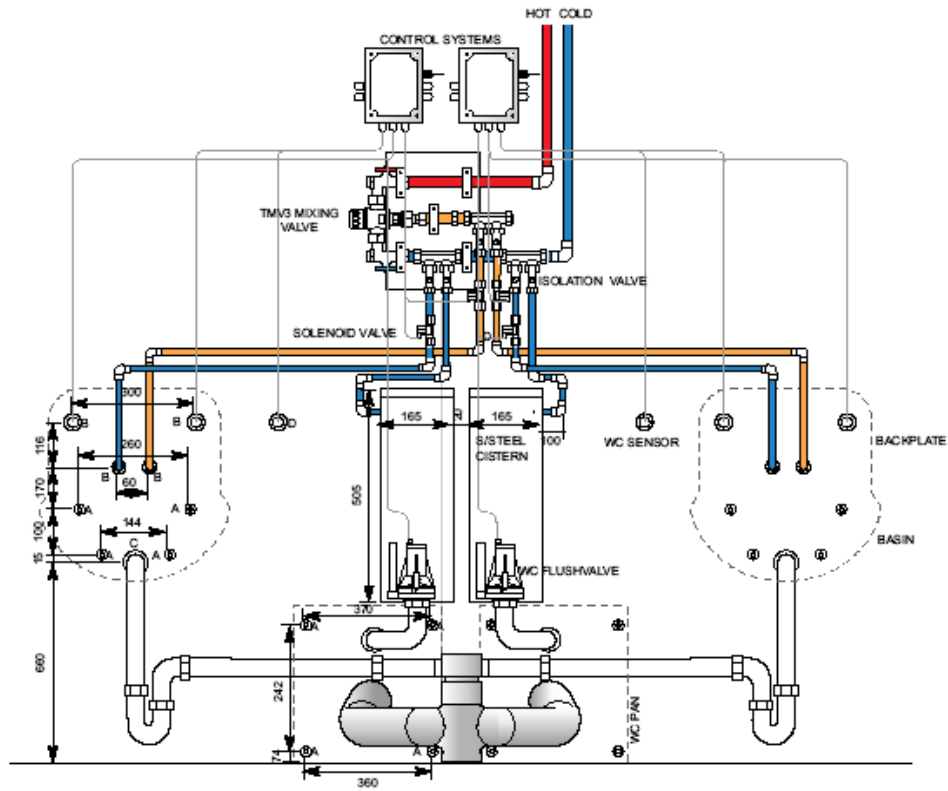


Clinical Suite
Service Duct Layout

Water
Management
Systems

HOLE SIZES (With tolerance)

- A = 15mm
- B = 40mm
- C = 50mm
- D = 22mm



APPROX. DIMENSIONS ONLY
NOT TO SCALE

Safe Ensuites Extra Options March 2010

Key switch

For resetting lockouts and isolating water

Shower corner soap dish

Mirror 390 x 290 [was 300 x 200]

Shelf incorporated into back plate

Retained waste outlet

We do not currently have a suitable anti-ligature solution. All installations we have supplied have used the loose plugs. Whilst we have no guidance relating to mental health, the current Home Office guidance for custodial is loose plug in order to eliminate previous ligature points on the retained plugs.

Corner Infill

To supply infill piece to fit gap between the pan and the wall

We propose a separate infill to be fitted on site. It will be approximately 10mm below the pan surface and extend from the wall approximately 350mm.

The piece will be bonded into position and sealed with anti-pick sealant.

Disabled WC Pan

The requirement for these is small but necessary to conform to Doc M regulations for disabled facilities. The small quantity plus extra work means the on-cost is quite high.

The additional cost to raise the WC pan by 60mm

This does not deal with spacing the pan off the wall and we do not offer a spacer from the same material for the WC pan at this time.

Spacer box the only solution we can currently offer is a brushed stainless

Installation of Disabled WC pan compared to standard WC pan

There is additional work [extra cost] as the stainless steel spacer box structure has to be secured in position first and there is also substantial more anti-pick sealant to be applied to finish.